

I. Corporate Overview

| | | |
|---------------------|---|-------|
| Foundation | April, 2020 | |
| Shareholders | Mitsubishi Corporation | 60.5% |
| | PeptiDream, Inc. | 39.5% |
| Business | Development, Production and Sales of Peptide-based Alternatives to Growth Factors | |
| Location | Tokyo, Japan | |
| Features | Develop Chemically Synthesized Peptides as Growth Factor Alternatives => Realize completely "Xeno-Free" Cell Culture Media used for regenerative medicine and cell therapy | |

II. Business Model

 Mitsubishi Corporation

 PeptiDream

- ✓ Company Management
- ✓ Sales & Marketing
- ✓ Strategic Partnership through Broad Interfaces

- ✓ Selection of Candidate Peptides through **PDPS***
- ✓ Development of Peptide Alternatives
- ✓ Technical Support

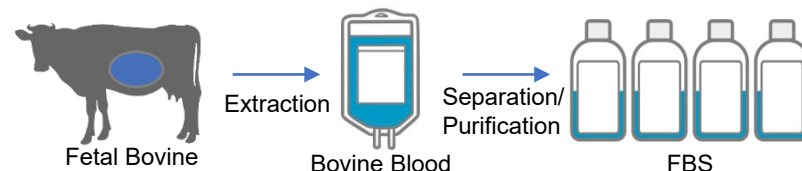
*PDPS = Peptide Discovery Platform System



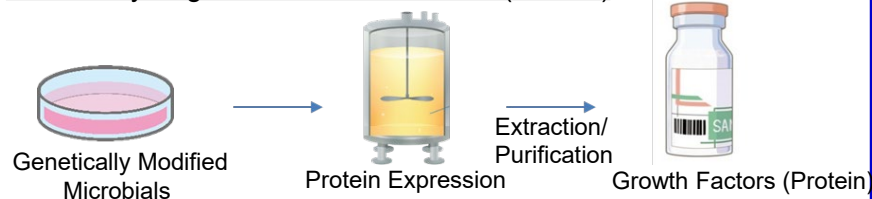
- ✓ Develop Manufacturing Methods for **Chemically Synthesized Peptides** (abiotic, non-GMO)
- ✓ Develop Peptide Alternatives to **a Wide-Range of Growth Factors as the Whole Package** for Customers
- ✓ Sales and Marketing of Peptide Alternatives in **Global Market**

III. Competitive Advantage

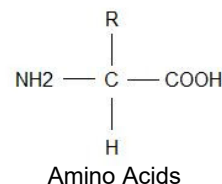
Fetal Bovine Serum (FBS)



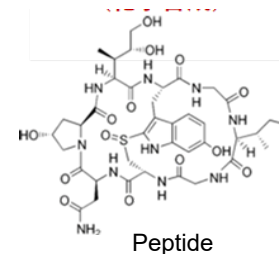
Genetically Engineered Growth Factors (Protein)



Peptide Alternatives to Growth Factors



Synthesis



< Comparison >

| | Quality Homogeneity | Origin | Stability/ Shelf-Life | Cost |
|----------------|---------------------|----------------|-----------------------|------------|
| FBS | No | Biotic | Short | High |
| Protein | Fair | Biotic | Short | Very High |
| Peptide | Excellent | Abiotic | Long | Low |

- ✓ Enables research & experiments under uniformed conditions
- ✓ Cost reduction in development, production, regulatory and QA
- ✓ Can be "de facto standard" recommended by authorities